

## HEAT RECOVERY URC DOMO SMART SERIES

AIR EXCHANGE SOLUTIONS SUITABLE FOR THE RESIDENTIAL SECTOR

CONTROL  
COMFORT  
EXCHANGE



RESIDENTIAL

**ErP**  
READY



OPTIONAL PLENUM

## URC DOMO SMART

### Z-HORIZONTAL/VERTICAL INSTALLATION

Modular ultra-light MVHR. Efficiency up to 90%.

#### CHARACTERISTICS

- Self-supporting sheet metal structure.
- Painted galvanized sheet metal panels externally with high EPS insulation density.
- Cross flow polypropylene exchanger high efficiency countercurrent ( $\leq 90\%$ )
- Summer and winter operation.
- Brushless fans with electronic motor and modulating control. Very high efficiency and bass noise levels - ErP2018 compliant.
- Filters with low ePM efficiency pressure drop 1 - 70% (F7) on both fresh air and air extracted.

#### OPTIONAL:

- Distribution fitting with maximum 8 connections of  $\varnothing 75$  mm.
- CO<sub>2</sub> and humidity probe for air quality monitoring (Air module Quality).

CODE	A.flow (m <sup>3</sup> /h) useful pressure 50 Pa	Diameter conn. (mm)	Wt. (KG)	Price each./€	Control code	Price each/€
URC-DOMOSMART20ZS	200	160	17		CNV-BPM	
URC-DOMOSMART20ZE	200	160	17		CNV-SMART	
URC-DOMOSMART40ZS	420	160	18		CNV-BPM	
URC-DOMOSMART40ZE	420	160	18		CNV-SMART	

#### CONTROL PANEL ZS VERSION

##### CNV-BPM

Manual: Manually set the fan speed to high, medium, and low.

Low: Automatically sets the fan speed to low. Adjustable timer for cleaning and filter replacement.



#### CONTROL PANEL ZE VERSION

##### CNV-SMART

Regulation of the supply and return ventilation set, separately, with 10 speed steps. Automatic bypass for free-cooling. Adjustable timer for cleaning and filter replacement. Weekly timer management.

Remote management via SMART VENT APP.



**ErP**  
READY



## URC DOMO SMART V

### V-VERTICAL INSTALLATION

Modular ultra-light MVHR. Efficiency up to 90%.

#### CHARACTERISTICS

- Self-supporting sheet metal structure.
- Externally painted galvanized sheet metal panels with high-performance EPS insulation density.
- High efficiency ( $\leq 90\%$ ) countercurrent cross-flow polypropylene exchanger
- Summer and winter operation.
- Brushless fans with electronic motor and modulating control. Very high efficiency and low noise levels - ErP2018 compliant.
- Filters with low efficiency pressure drop ePM 1 - 70% (F7) on both fresh air and extracted air.

#### OPTIONAL:

- CO<sub>2</sub> and humidity probe for monitoring air quality (Air Quality module).

CODE	A.flow (m <sup>3</sup> /h) useful pressure 50 Pa	Diameter conn. (mm)	Wt. (KG)	Price each./€	Control code	Price each/€
URC-DOMOSMART20VS	200	160	24		CNV-BPM	
URC-DOMOSMART20VE	200	160	24		CNV-SMART	
URC-DOMOSMART40VS	420	160	25		CNV-BPM	
URC-DOMOSMART40VE	420	160	25		CNV-SMART	

#### CONTROL PANEL ZS VERSION

##### CNV-BPM

Manual: Manually set the fan speed to high, medium, and low.

Low: Automatically sets the fan speed to low. Adjustable timer for cleaning and filter replacement.



#### CONTROL PANEL ZE VERSION

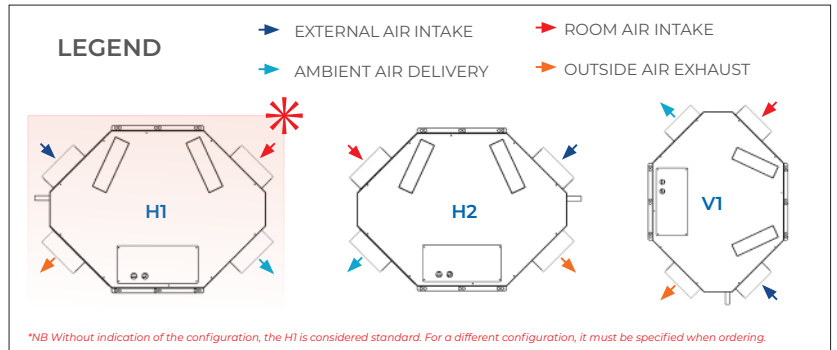
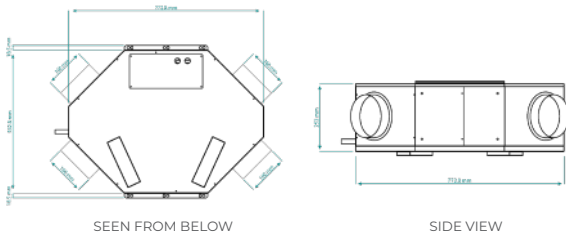
##### CNV-SMART

Regulation of the supply and return ventilation set, separately, with 10 speed steps. Automatic bypass for free-cooling. Adjustable timer for cleaning and filter replacement. Weekly timer management.

Remote management via SMART VENT APP.

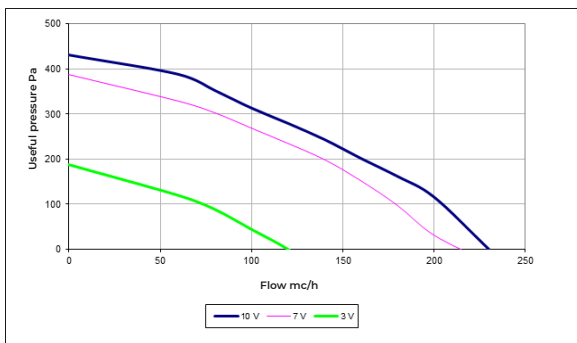


## DIMENSIONAL DATA - 20Z 40Z

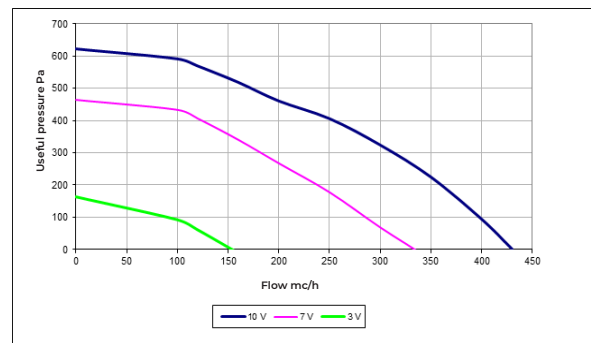


## PERFORMANCE GRAPHS

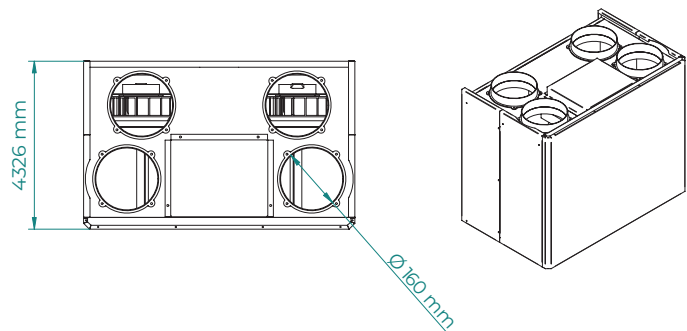
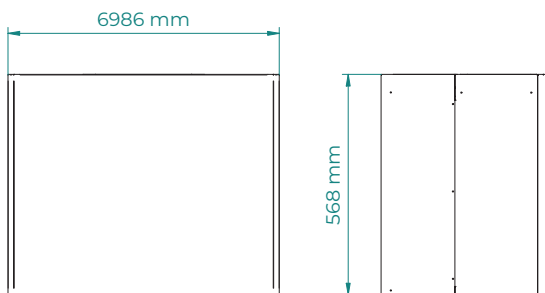
### URC DOMO SMART 20Z



### URC DOMO SMART 40Z

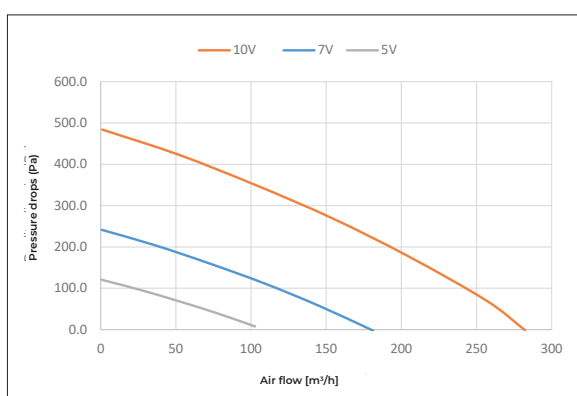


## DIMENSIONAL DATA - 20V 40V

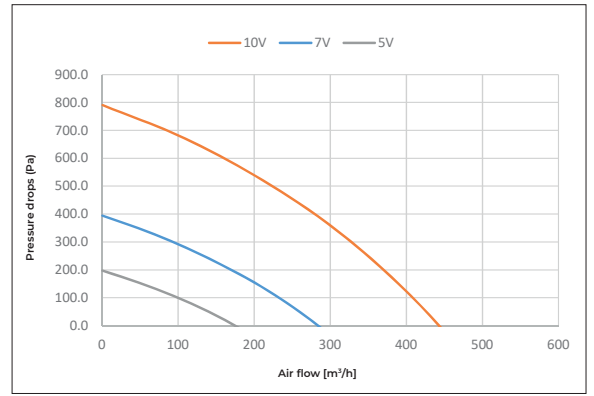


## PERFORMANCE GRAPHS


### URC DOMO SMART 20V





### URC DOMO SMART 40V





## AIR EXCHANGE COMPONENTS - KIT FOR URC DOMO SMART Z/V

A	Code	Description	∅ (mm)	Price each/€
	GR-EXT-FL200	ROUND STAINLESS STEEL GRILL WITH IN STAINLESS STEEL ANTI-BIRD NET AND DIVERTER OF FLOW ALUMINUM FINISH	200	


B	Code	Description	∅ (mm)	Price each/€
	AIR-MF200	FEMALE-FEMALE SLEEVE IN GALVANIZED SHEET METAL	200	

C	Code	Description	∅ (mm)	Price each/€
	AIR-RCPL200-160	CIRCULAR REDUCTION IN SHEET METAL GALVANIZED FOR CONNECTION TO THE COLLECTOR	200/160	

D	Code	Description	∅ (mm)	Price each/€
	PRO-EXT-D160	STEEL TELESCOPIC EXTENSION GALVANIZED	160	


E	Code	Description	∅ (mm)	Price m/€
	TER160	FLEXIBLE HOSE WITH RESIN FILM POLYPHENIC WITH ANTIBACTERIAL AND ANTIMOLD MASTER THERMAL INSULATING COATING (PACK. 10 m) <i>Notes: See conditions for non-standard transport *</i>	*160	




F	Code	Description	∅ in (mm)	∅ out (mm)	Price each/€
	RACCORDO-SMART-4XD75*	DISTRIBUTION CONNECTION SMART 4XD75	160	4XDN75	
	RACCORDO-SMART-6XD75*	DISTRIBUTION CONNECTION SMART 6XD75	160	6XDN75	
	RACCORDO-SMART-8XD75*	DISTRIBUTION CONNECTION SMART 8XD75	160	8XDN75	

\*NB Can be used either as a connecting plenum connected via a flexible hose (see kit) or directly assembled to the machine.




G	Code	Description	conf.	DN (mm)	Price m/€
	AIR10003	CORRUGATED ROUND TUBE + ANTISTATIC TREATMENT AND ANTIBACTERIAL	50 m	75 mm	



H	Code	Description	Price m/€
	PLENUMVMC-KIT	ABS GRILLE DOOR PLENUM KIT FOR MVHR GRID WITH: - 2 REAR CONNECTIONS DN 75/90 - 2 UPPER CONNECTIONS DN 75/90 - 1 SIDE CONNECTION DN 75/90 - 1 SLEEVE MVHR 75 - 4 CAPS 75/90 - 2 BRACKETS	



I	Code	Description	Price m/€
	GRIGLIAVMC-1	MICRO-PERFORATED GRILLE IN RAL 9003 STEEL FOR PLENUMVMC-KIT	

## ACCESSORIES




	Code	Description	∅ (mm)	Price each/€
	FSI60-270	CABLE TIE HOSE CLAMP IN STAINLESS STEEL	60-270	




	Code	Description	∅ (mm)	Price each/€
	AIR10109-P	PVC FIXING CLIPS FOR CORRUGATED PIPE ROUND (CONF. DA 48 PZ)	75	



	Code	Description	Price m/€
	SERRANDA-VMC75-90	DUMPER 75/90 MM	



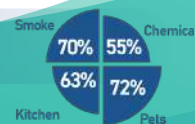
	Code	Description	Price €
	CO2SENSOR-SMART	PROBE FOR DETECTING CO <sub>2</sub> , HUMIDITY AND PM2.5 PARAMETERS	

## SANITIZATION SYSTEM FOR MVHR

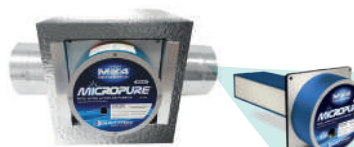
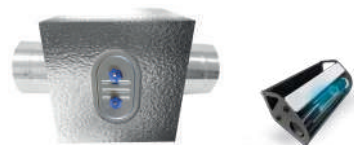
REDUCTION OF BACTERIA AND MOLD

ODOR REDUCTION

99%



## SANIVMC SERIES - ACTIVE SANITIZATION MODULES FOR MVHR SYSTEMS IN RESIDENTIAL ENVIRONMENTS OR SMALL OFFICES



PAL FITTING + SANITIZATION	∅ (mm)	Code	Price each/€
PAL fitting - 2 x DN 120 mm + KIT-SANI1	120	SANIVMC120-FC	
PAL fitting - 2 x DN 160 mm + KIT-SANI1	160	SANIVMC160-FC	
PAL fitting - 2 x DN 200 mm + KIT-SANI1	200	SANIVMC200-FC	

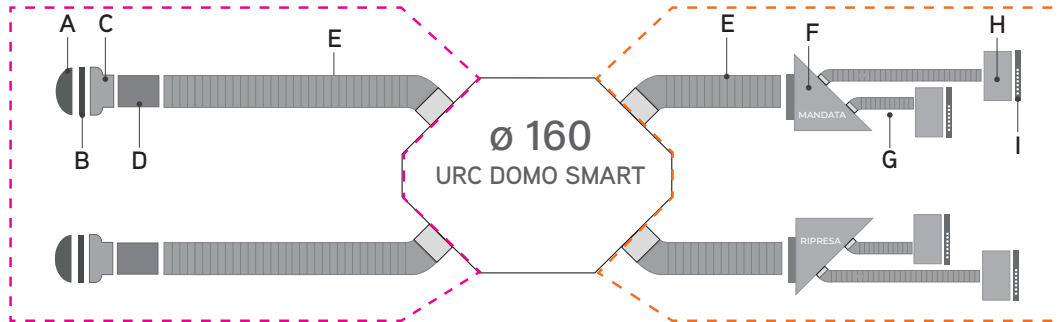
PAL FITTING + SANITIZATION	∅ (mm)	Code	Price each/€
PAL fitting - 2 x DN 120 mm + MC 5"	120	SANIVMC120-MC	
PAL fitting - 2 x DN 160 mm + MC 5"	160	SANIVMC160-MC	
PAL fitting - 2 x DN 200 mm + MC 5"	200	SANIVMC200-MC	



PRESSURE SWITCH DF optional accessory for SANIVMC

## AIR EXCHANGE SCHEME

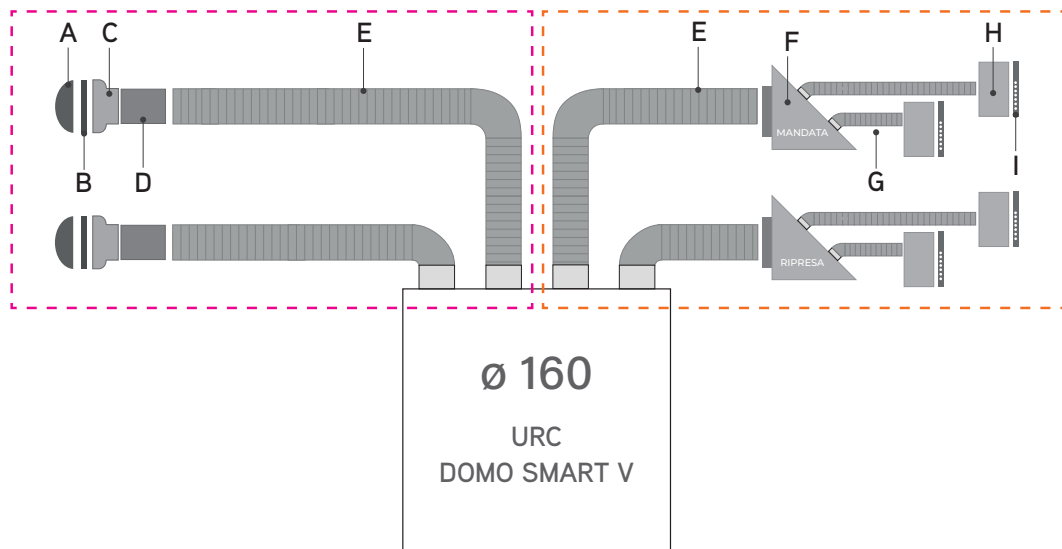
### KIT FOR RECOVERY HORIZONTAL VERSION CONNECTIONS Ø 160



AIR EXCHANGE COMPONENTS - KIT FOR URC DOMO SMART Z/V

RECOVERY	DELIVERY	KIT CODE	KIT PRICE	EXTERNAL INTAKE / EJECTION					DELIVERY / RETURN						
				A	B	C	D	E	-	F	G	-	H	-	I
2	2	KITVMC1602M-2R		2	2	2	2	10	8	2	50	48	4	4	4
2	3	KITVMC1602M-3R		2	2	2	2	10	8	2	50	48	5	5	5
3	2	KITVMC1603M-2R		2	2	2	2	10	8	2	50	48	5	5	5
3	3	KITVMC1603M-3R		2	2	2	2	10	8	2	50	48	6	6	6
3	4	KITVMC1603M-4R		2	2	2	2	10	8	2	50	48	7	7	7
4	2	KITVMC1604M-2R		2	2	2	2	10	8	2	50	48	6	6	6
4	3	KITVMC1604M-3R		2	2	2	2	10	8	2	50	48	7	7	7
4	4	KITVMC1604M-4R		2	2	2	2	10	8	2	50	48	8	8	8
5	2	KITVMC1605M-2R		2	2	2	2	10	8	2	50	48	7	7	7
5	3	KITVMC1605M-3R		2	2	2	2	10	8	2	50	48	8	8	8
5	4	KITVMC1605M-4R		2	2	2	2	10	8	2	50	48	9	9	9
6	3	KITVMC1606M-3R		2	2	2	2	10	8	2	50	48	9	9	9
6	4	KITVMC1606M-4R		2	2	2	2	10	8	2	50	48	10	10	10
6	5	KITVMC1606M-5R		2	2	2	2	10	8	2	50	48	11	11	11

### KIT FOR RECOVERY VERTICAL VERSION CONNECTIONS Ø 160





## DECENTRALIZED CMV - URCP

### DECENTRALIZED CMV VERSION

High efficiency heat recovery unit up to 90%.

#### CHARACTERISTICS

- Alternating flow regenerative heat exchanger, in technical ceramics with high exchange efficiency and low load losses.
- DC Brushless fan with electronic motor and control modulating, very high efficiency and low noise levels.
- G3 filter with low pressure drops, easily removable.
- Operation of the units in supply or return mode (opposite or parallel).
- Infrared control supplied.



#### VERSION E ELECTRONICS

Managed with remote control with radio frequency operation. Selection of the ventilation speed regime and the operating mode between intake only, extraction only or automatic cycle for heat recovery; selection of operation with sensor mode; automatic management of ventilation and cycle time to optimize heat recovery efficiency.

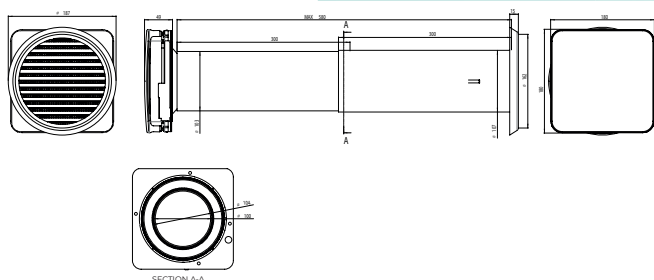
Up to a maximum of 13 units installed with a single command (1 master + max 11 slaves).

CODE	UNIT	Air flow m <sup>3</sup> /h	Ø hole (mm)	Price each/€
URCP02EM	Master	12 - 24	100	
URCP02ES	Slave	12 - 24	100	
URCP05EM	Master	25 - 50	160	
URCP05ES	Slave	25 - 50	160	

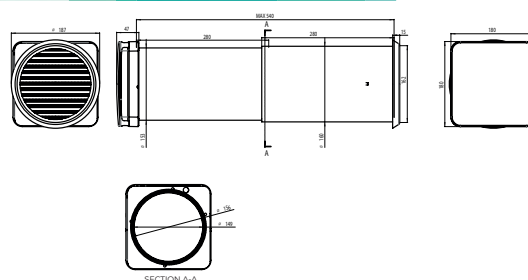
## DIMENSIONAL DATA

DIMENSIONAL DATA VALID FOR ALL MODELS

### URCP 02



### URCP 05



follow **Air Control srl**

